

Air Flow Company, Inc.

850 W. Fullerton Ave. • Addison, IL 60101
 Tel (630) 628-1138 Fax (630) 628-1149

EA-545V

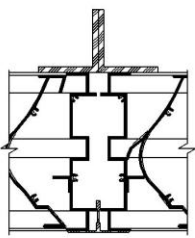
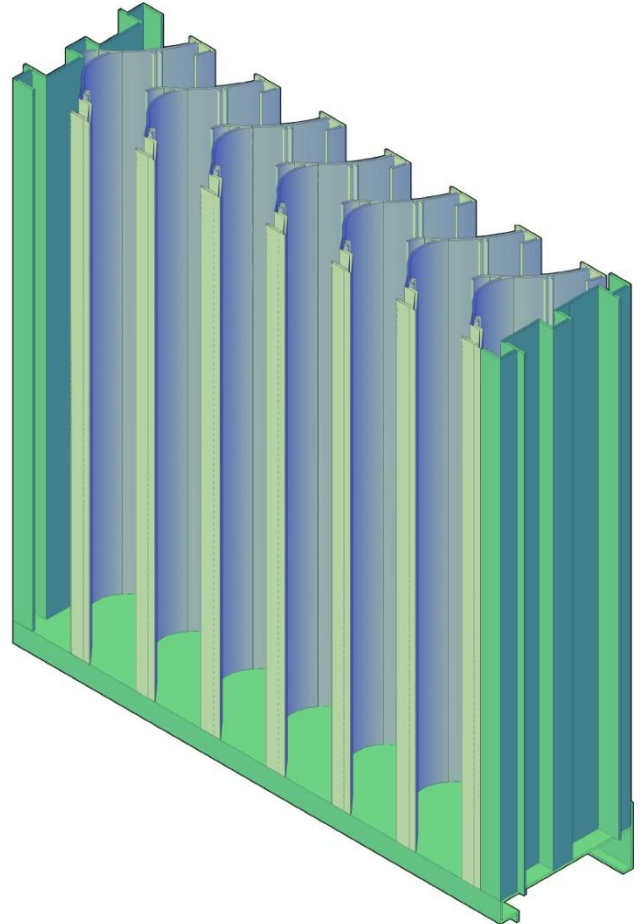
5" Wind Driven, Drainable
 Sight Proof Vertical
 Stationary Louver

Standard Louver Construction

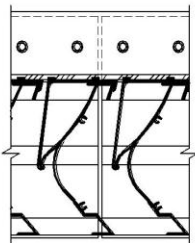
✓ Frame	Channel
✓ Frame Thickness	.081" extruded aluminum 6063-T5
✓ Blades Thickness	.081" extruded aluminum 6063-T5
✓ Blade Positioning	2-½" spacing center to center
✓ Fasteners	3/16" plated steel screw
✓ Screen	.050" x ¾" expanded aluminum without frame
✓ Finish	Mill
✓ Undersized	¼" under opening sizes
✓ Mullions	Invisible
✓ Minimum Size	12" x 12"
✓ Maximum Single Section	120" x 84" or 84" x 120"

Optional Construction

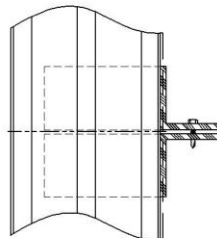
Frames	Channel .125" extruded aluminum 6063-T5
Blades	.125" extruded aluminum 6063-T5
Fasteners	Welded Construction
	Stainless Steel Fasteners
Screen	.063" x ½" wire mesh Bird Screen
	18 x 16 Insect screen
Finish	Prime coat
	Baked enamel
	Powder coat
	Kynar 500 2 Coat 3 Coat
	Anodized Clear Color
Mullions	Visible
Frame Accessories	Flange
	Pan
	Extended sill



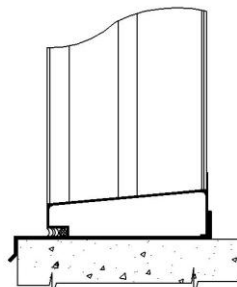
Exposed Mullion



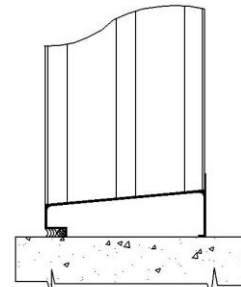
Invisible Mullion



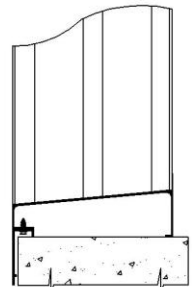
Hor. Invisible Mullion



Channel W/sill



Channel Frame



Flanged (1-1/2")

Louver Schedule

Item	Qty	Opening Size (W x H)	Notes	Project:
				Location:
				Arch/Eng:
				Customer: