

EA-245VP

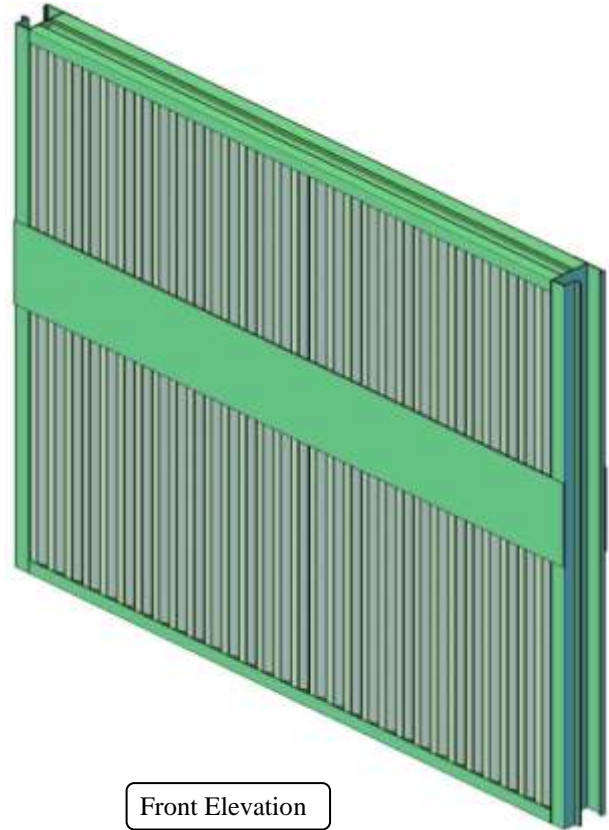
2" Intake & Exhaust Sight Proof Stationary Louver

Standard Louver Construction

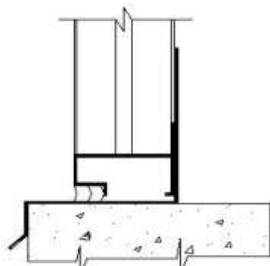
✓ Frame	Channel
✓ Frame Thickness	.063" extruded aluminum 6063-T5
✓ Blades Thickness	.063" extruded aluminum 6063-T5
✓ Blade Positioning	1" Spacing Center to Center
✓ Fasteners	3/16" plated steel screw
✓ Screen	.050" x 3/4" expanded aluminum without frame
✓ Finish	Mill
✓ Undersized	1/4" under opening sizes
✓ Mullions	Invisible
✓ Minimum Size	12" x 12"
✓ Maximum Single Section	120" x 84" or 84" x 120"

Optional Construction

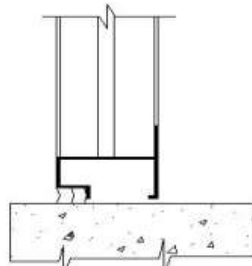
Frames	N/A		
Blades	N/A		
Fasteners	Welded Construction		
	Stainless Steel Fasteners		
Screen	.063" x 1/2" wire mesh Bird Screen		
	18 x 16 Insect screen		
Finish	Prime coat		
	Baked enamel		
	Powder coat		
	Kynar 500	2 Coat	3 Coat
Mullions	Anodized	Clear	Color
	Visible		
Frame Accessories	Flange		
	Pan		
	Extended sill		



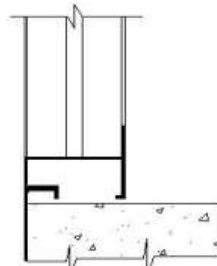
Front Elevation



Channel W/sill



Channel Frame



Flanged (1-1/2")

Louver Schedule

Item	Qty	Opening Size (W x H)	Notes	Project:	
				Location:	
				Arch/Eng:	
				Customer:	