

Air Flow Company, Inc.

850 W. Fullerton Ave. • Addison, IL 60101
 Tel (630) 628-1138 Fax (630) 628-1149

EA-201i

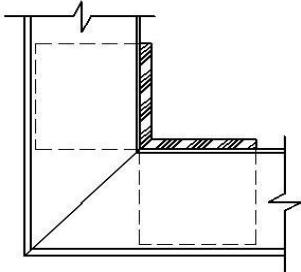
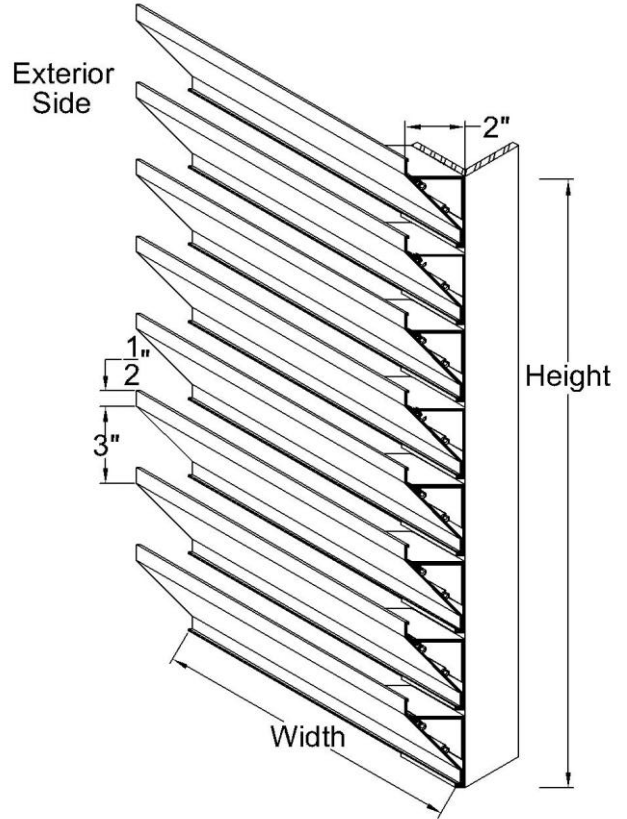
2" Sight Proof, Inverted Blade Stationary Louver

Standard Louver Construction

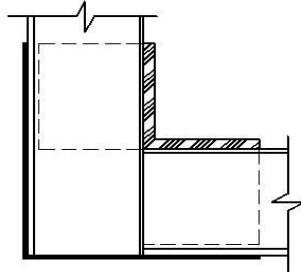
✓ Frame	Frameless
✓ Blades Thickness	.063" extruded aluminum 6063-T5
✓ Blade Positioning	45° angle with 3" spacing center to center
✓ Corners	Post
✓ Support	2 x 2 x 3/16" extruded aluminum
✓ Fasteners	3/16" plated steel screw
✓ Finish	Mill
✓ Undersized	1/4" under opening sizes
✓ Mullions	Invisible
✓ Minimum Size	12" x 12"
✓ Maximum Single Section	120" x 84" or 84" x 120"

Optional Construction

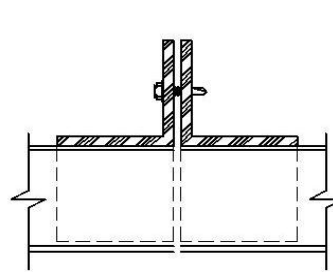
Frames	.063" extruded aluminum 6063-T5		
Support	2 x 2 x 1/4" extruded aluminum		
Fasteners	Welded Construction		
	Stainless Steel Fasteners		
Screen	.050" x 3/4" expanded aluminum		
	.063" x 1/2" wire mesh Bird Screen		
	18 x 16 Insect screen Insect Screen		
Finish	Prime coat		
	Baked Enamel		
	Powder coat		
	Kynar 500	2 Coat	3 Coat
	Anodized	Clear	Color
Mullions	Visible		
Corners	Mitered		



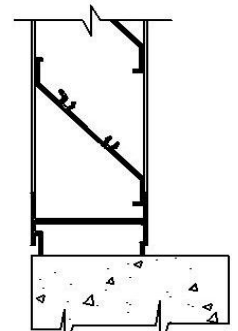
Mitered Corner



Post Corner



Invisible Mullion



Channel Frame

Louver Schedule

Item	Qty	Opening Size (W x H)	Notes	Project:	
				Location:	
				Arch/Eng:	
				Customer:	